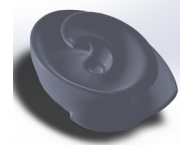


PERFORMANCE CURVE

Project No.
Rev. No.
Date
Page No.

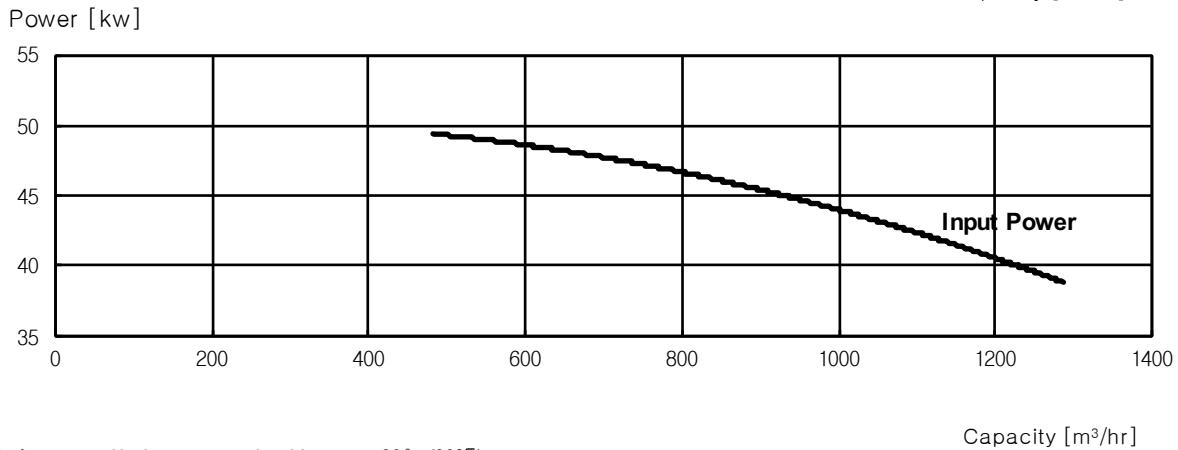
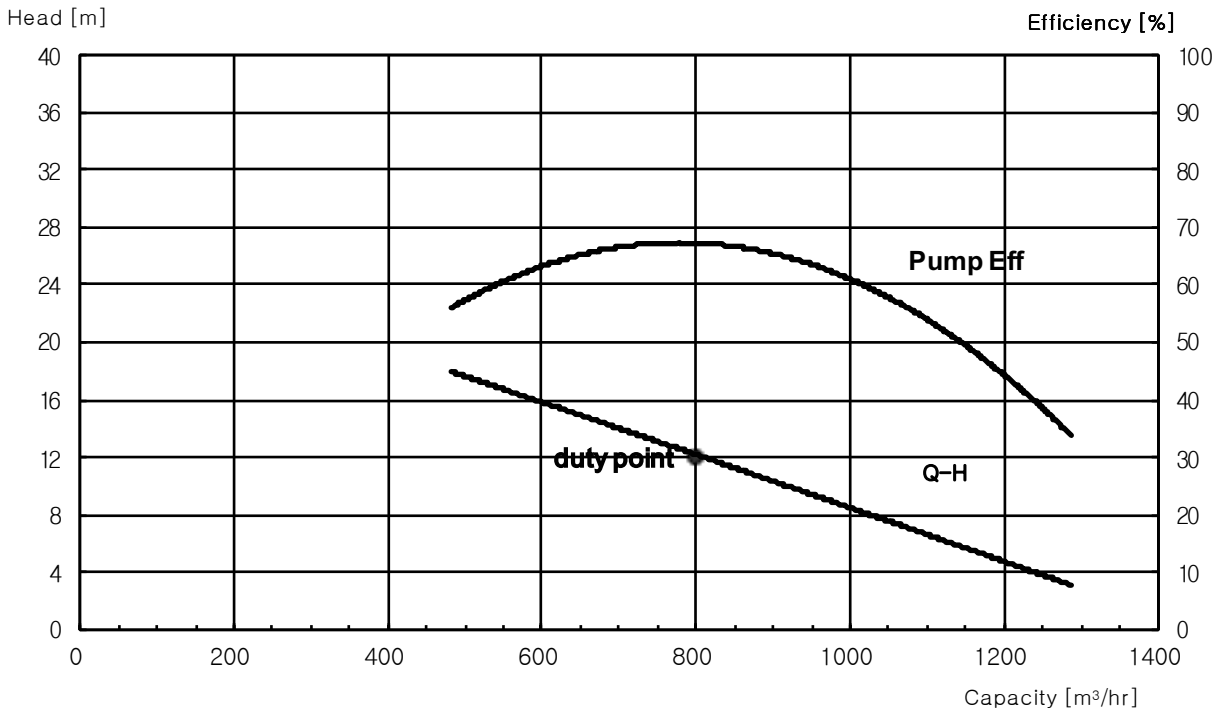
1/1

MODEL: SSP300.450.6.U



| A. Pump Specification | | | | B. Motor Specification | | | |
|-----------------------|-----------------|-------|--------------------|------------------------|--------------------------|----|--|
| 1 | Rated Head | 12 | m | Power Supply | 3 Φ x 400 V x 50 Hz | | |
| 2 | Rated Capacity | 800 | m ³ /hr | Rated Power | 45 | kw | |
| 3 | Discharge Dia. | DN300 | mm | No. of Poles | 6 | P | |
| 4 | Pump Efficiency | 68 | % | Rated current | 89 | A | |
| 5 | Revolution | 980 | rpm | Insulation class | F | | |
| 6 | Solid Size | 150 | mm | Starting method | DOL & Δ | | |
| 7 | Impeller dia | 466 | | | | | |

C. Pump Performance Curve



※ Performance with clear water and ambient temp 20 °C (68 °F)