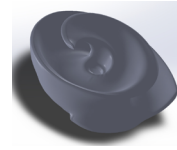


PERFORMANCE CURVE

Project No.
Rev. No.
Date
Page No.



MODEL: SSP80. 22. 2. M

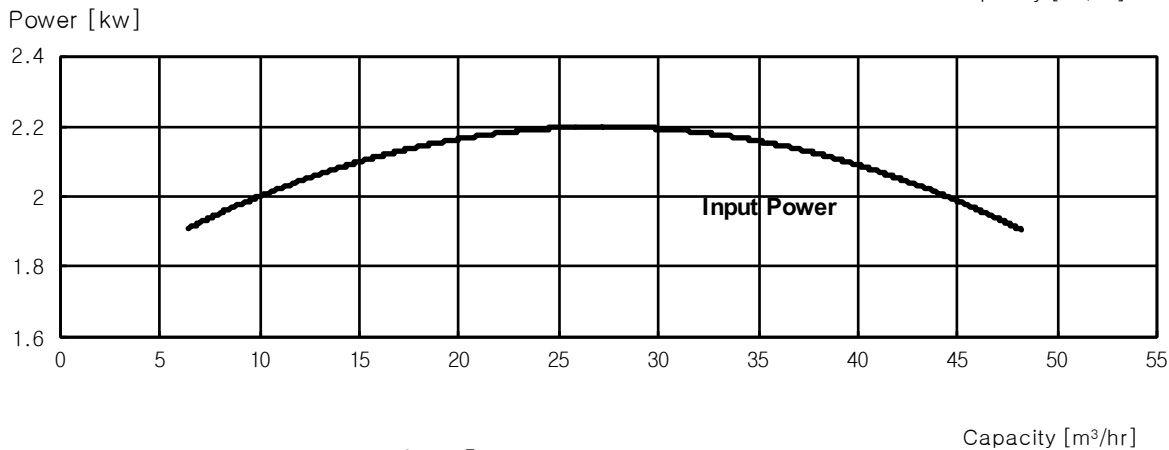
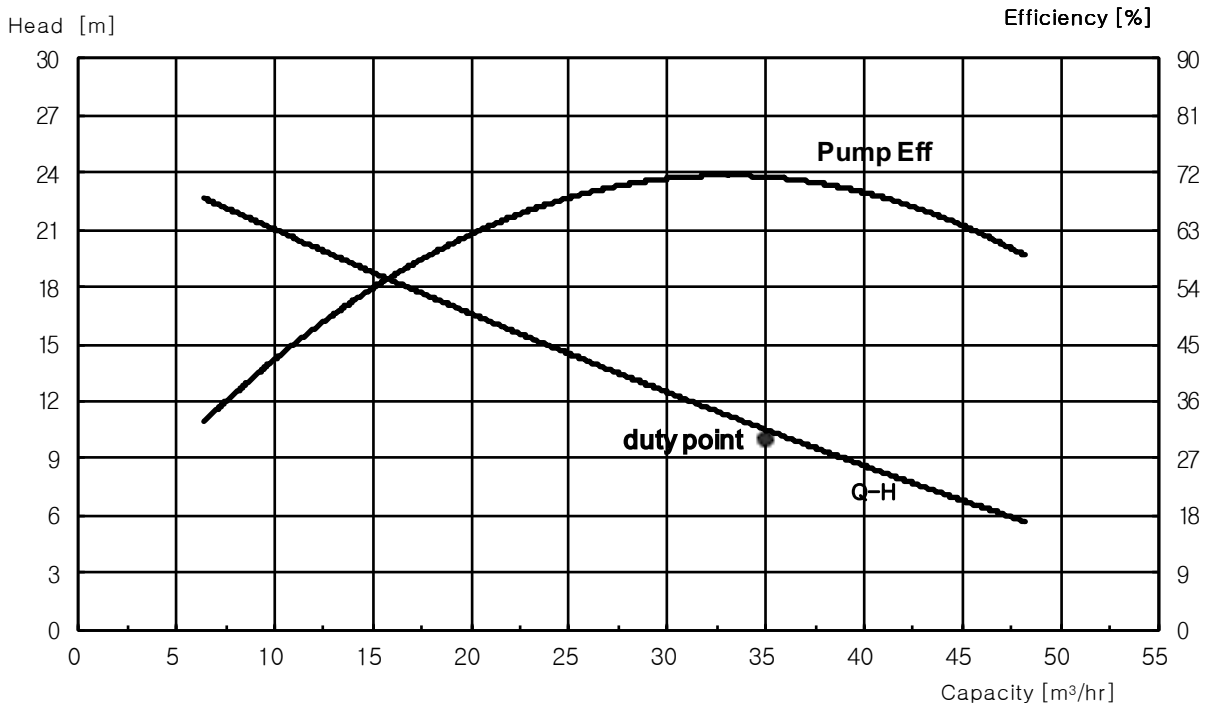
A. Pump Specification

1	Rated Head	10	m
2	Rated Capacity	35	m ³ /hr
3	Discharge Dia.	DN80	mm
4	Pump Efficiency	70	%
5	Revolution	2900	rpm
6	Solid Size	40	mm
7	Imp Dia	157	

B. Motor Specification

Power Supply	3 Φ x 400 V x 50 Hz
Rated Power	2.2 kw
No. of Poles	2 P
Rated current	4.7 A
Insulation class	F
Starting method	DOL

C. Pump Performance Curve



※ Performance with clear water and ambient temp 20°C (68°F)