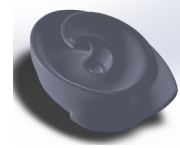


PERFORMANCE CURVE

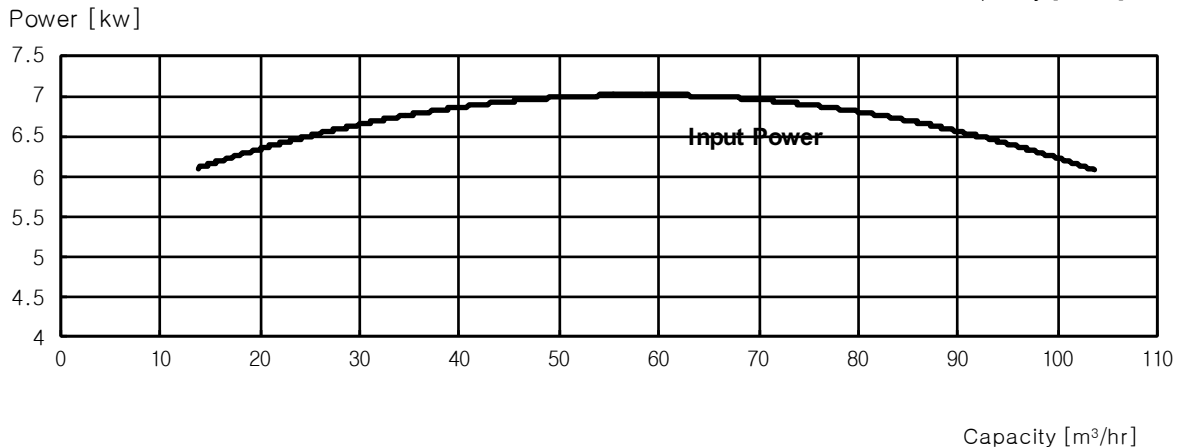
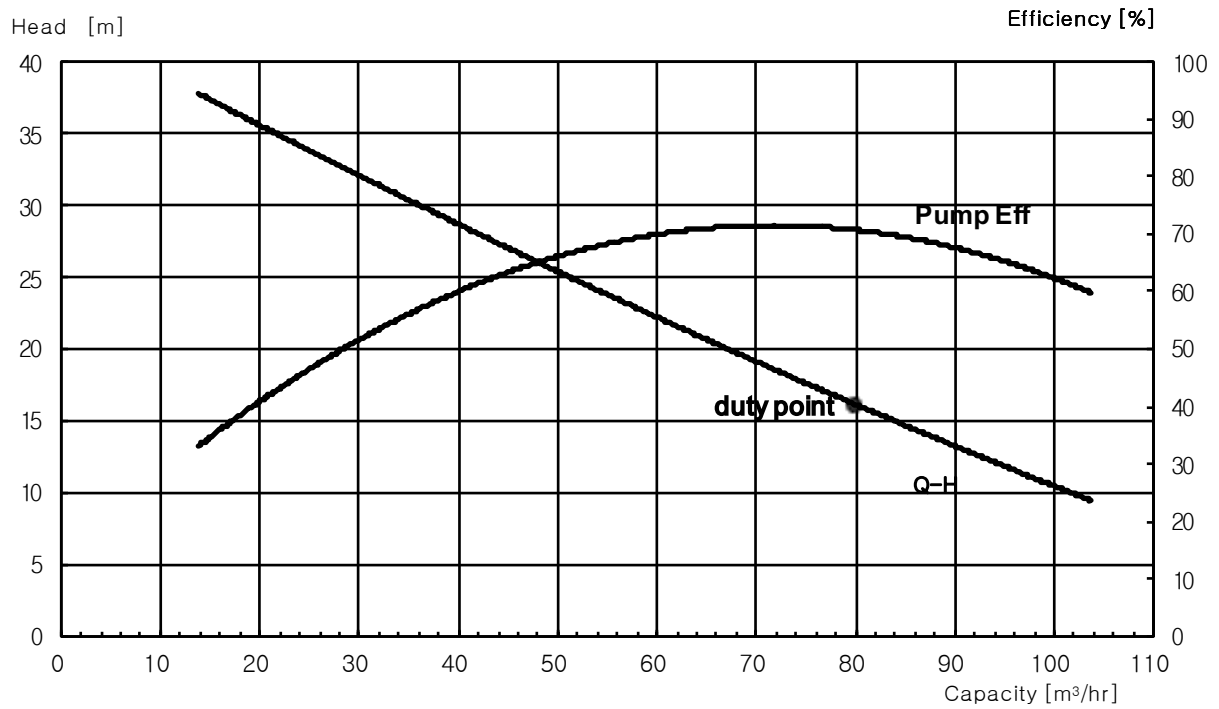
Project No.
Rev. No.
Date
Page No.



MODEL: SSP80.75.2.M

A. Pump Specification				B. Motor Specification			
1	Rated Head	16	m	Power Supply	3 Φ x 400 V x 50 Hz		
2	Rated Capacity	80	m ³ /hr	Rated Power	7.5	kw	
3	Discharge Dia.	DN80	mm	No. of Poles	2	P	
4	Pump Efficiency	70	%	Rated current	14.5	A	
5	Revolution	2900	rpm	Insulation class	F		
6	Solid Size	50	mm	Starting method	DOL or Y Δ		
7	Imp Dia	203	mm				

C. Pump Performance Curve



※ Performance with clear water and ambient temp 20 °C (68 °F)