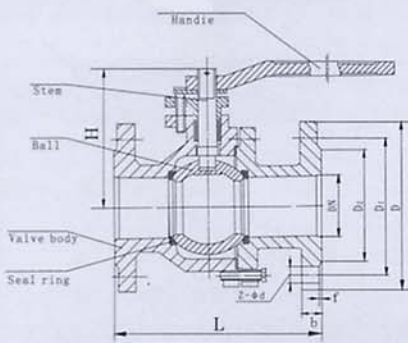


Q41F-16 Q11F-16 Q41F-16 Q11F-16 Ball valve



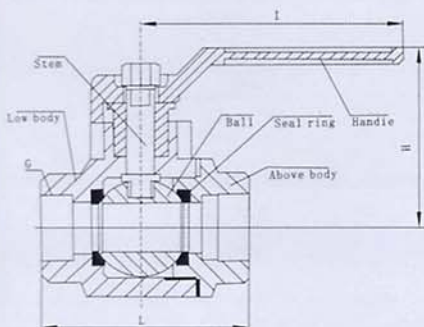
Usage: This valve applies to the water or steam pipeline which is uncnosion of medium and the pipeline must be the sorking temperature $\leq 150^{\circ}\text{C}$.

Main parts and materials

Parts name	Material
Valve body, Ball	Grey iron
Stem	Carbon steel
Seal ring	F4

Function and specification

Type	Nominal pressure (MPa)	Testing		Suitable temperature ($^{\circ}\text{C}$)	Suitable medium
		Strength (water) (MPa)	Enclose (water) (MPa)		
Q41F-16	1.6	2.4	1.8	≤ 150	Water, Vapour, Oil
Q11F-16					



Outling and connect measurement

Type	Nominal ϕ DN(mm)	Measurement(mm)							Weight (kg)
		L	D	D ₁	D ₂	b-f	z- ϕ d	H	
Q41F-16	20	150	105	75	55	16-2	4- ϕ 14	84	4
	25	160	115	85	65	16-2	4- ϕ 14	95	5
	32	165	135	100	78	18-2	4- ϕ 18	150	6.5
	40	180	145	110	85	18-3	4- ϕ 18	150	9
	50	203	160	125	100	20-3	4- ϕ 18	190	11.5
	65	222	180	145	120	20-3	4- ϕ 18	195	17
	80	241	195	160	135	22-3	8- ϕ 18	215	22.5
	100	305	215	180	155	24-3	8- ϕ 18	250	31
	125	356	245	210	185	26-3	8- ϕ 18	285	59
	150	394	280	240	210	28-3	8- ϕ 23	370	80
200	457	335	295	265	30-3	12- ϕ 23	370	95	

Q11F-16

G	L	H	I	Weight(Kg)
1/2	65	63	100	0.67
3/4	75	68	100	0.92
1	90	75	115	1.3
1 1/4	105	80	115	2.5
1 1/2	130	104	161	3.54
2	140	112	161	4.19