

# DML - DMLF

## SUBMERSIBLE SEWAGE PUMPS SINGLE-CHANNEL



### SPECIFICATIONS

PUMP			
Liquid Handled	Type of liquid	Sewage, Wastewater	
	Temperature	0-40°C	
	Max solid size [mm]	DML: 76 mm / 30 mm (DMLF 1,1 kW), 40 mm (DMLF)	
Synchronous Speed		~1450 min <sup>-1</sup> (DML), ~2850 min <sup>-1</sup> (DMLF)	
Construction	Mechanical Seal	Double mechanical seal (DML)	
	Impeller	Single channel, non-clog	
	Bearing	Pre-lubricated bearing	
Material	Casing	Cast iron	
	Impeller	Cast iron	
	Shaft	403 Stainless Steel (DML), 420B Stainless Steel (DMLF)	
	Mechanical Seal	Impeller side	SiC / SiC / NBR (DML - DMLF)
		Motor side	Ceramic / Carbon / NBR (DML)
MOTOR			
Type	Air-filled dry submersible three phase (DML) and single phase (DMLF)		
N° of poles	4 poles (DML), 2 poles (DMLF)		
Insulation Class	Class F (DML), Class H (DMLF)		
Degree protection	IP68		
ACCESSORIES			
Option	Quick discharge connector (QDC)		

The pump is equipped with a discharge elbow (DML).

### Model DML - DMLF

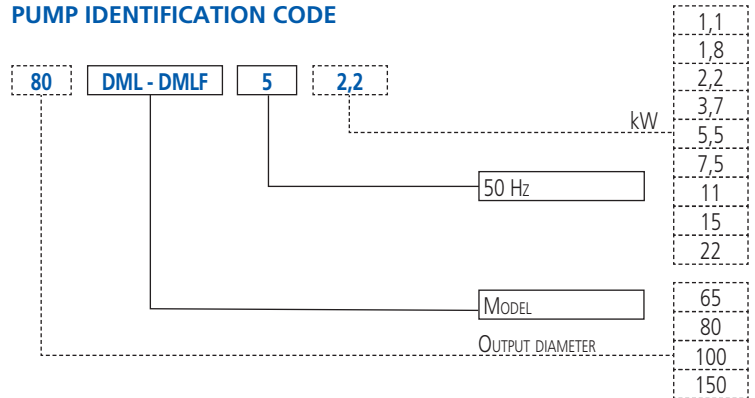
#### Features:

Single-channel impeller

#### Applications:

- Evacuation of civil and industrial waste waters
- Treating liquid manure
- Draining sub-layer zones
- Generally moving foul waste liquids also containing solid substances and/or suspended filamentary substances
- Emptying seepage water
- Moving sewage (sanitary services)
- Emptying cesspits

### PUMP IDENTIFICATION CODE



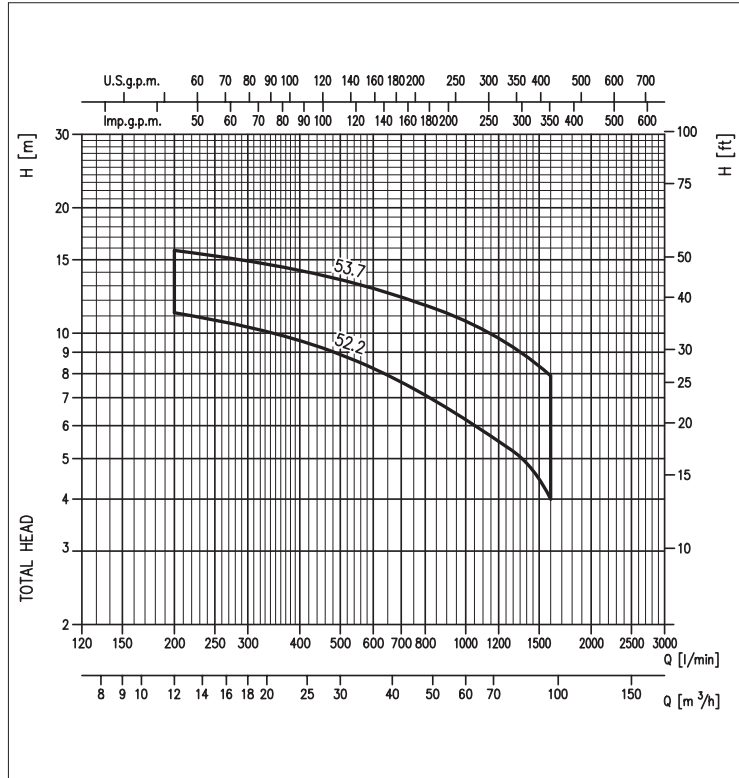


# DML - DMLF

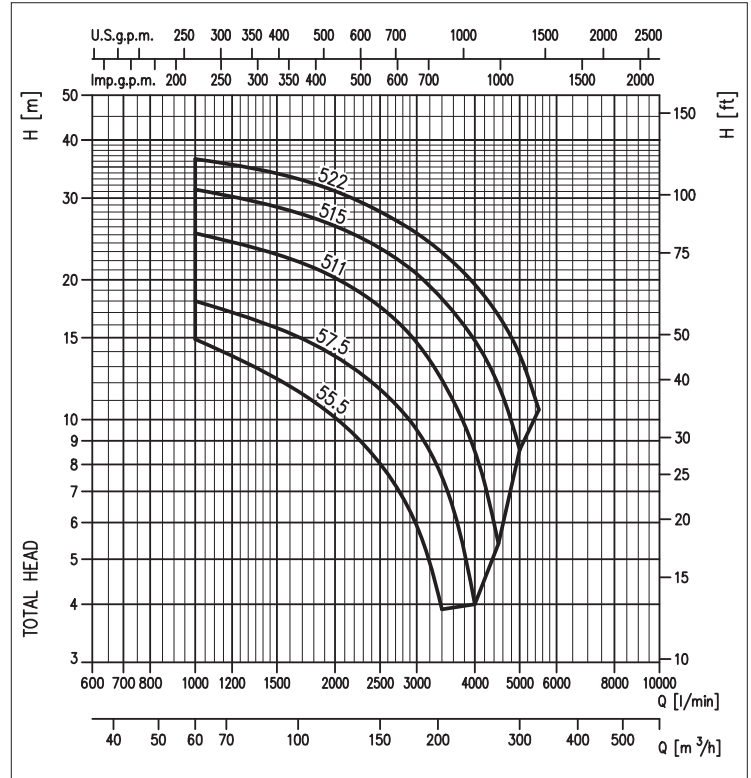
## SUBMERSIBLE SEWAGE PUMPS SINGLE-CHANNEL

### PERFORMANCE CHART

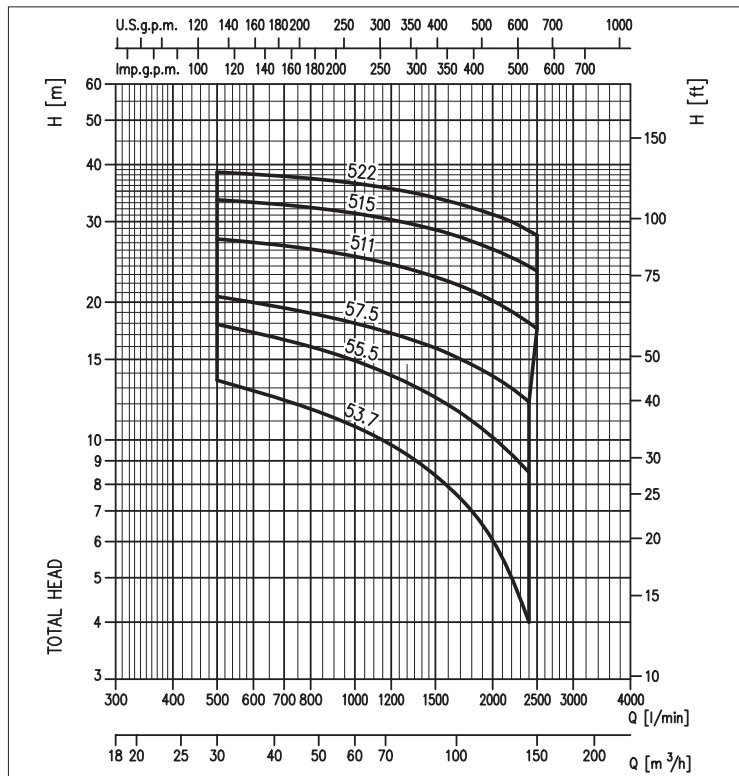
#### 80DML



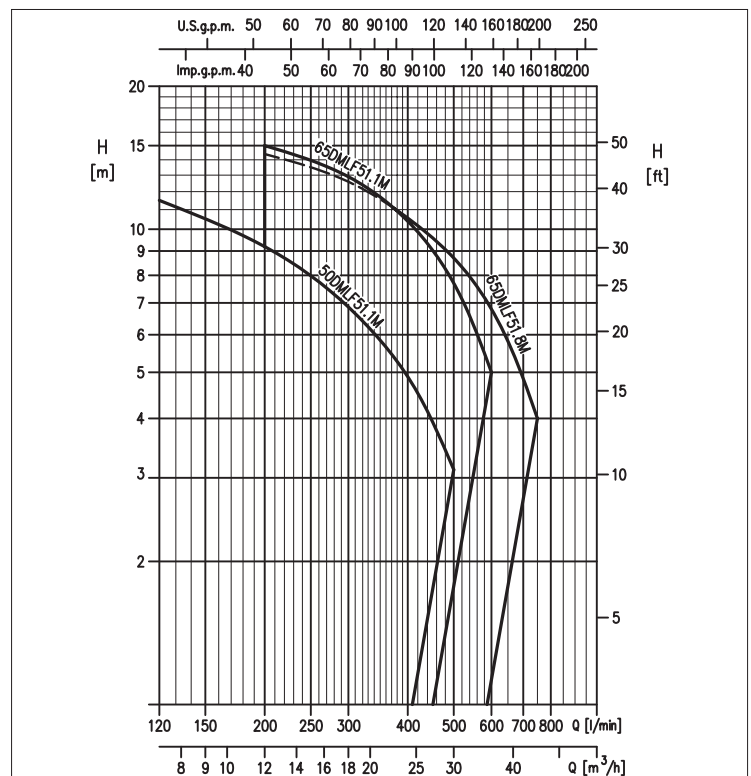
#### 150DML



#### 100DML



#### 50-65DMLF



# DML - DMLF

## SUBMERSIBLE SEWAGE PUMPS SINGLE-CHANNEL

**PERFORMANCES TABLE 80DML**

Model	P <sub>2</sub>		Q = Capacity							
			l/min 200	400	600	800	1000	1200	1400	1600
	[kW]	[HP]	m <sup>3</sup> /h 12	24	36	48	60	72	84	96
			H = Head [m]							
80DML52.2	2,2	3	11,2	9,6	8,2	7,1	6,2	5,5	4,9	4,0
80DML53.7	3,7	5	15,8	14,2	12,8	11,7	10,7	9,7	8,8	7,9

**PERFORMANCES TABLE 100DML**

Model	P <sub>2</sub>		Q = Capacity							
			l/min 500	1000	1300	1600	1900	2200	2400	2500
	[kW]	[HP]	m <sup>3</sup> /h 30	60	78	96	114	132	144	150
			H = Head [m]							
100DML53.7	3,7	5	13,5	10,7	9,3	7,9	6,5	5,0	4,0	-
100DML55.5	5,5	7,5	17,9	14,9	13,4	11,9	10,6	9,3	8,5	-
100DML57.5	7,5	10	20,6	18,0	16,7	15,5	14,2	13,0	12,1	-
100DML511	11	15	27,5	25,2	23,7	22,2	20,7	19,1	18,0	17,5
100DML515	15	20	33,5	31,3	29,8	28,3	26,7	25,1	24,0	23,4
100DML522	22	30	38,5	36,4	34,9	33,3	31,7	30,0	28,7	28,0

**PERFORMANCES TABLE 150DML**

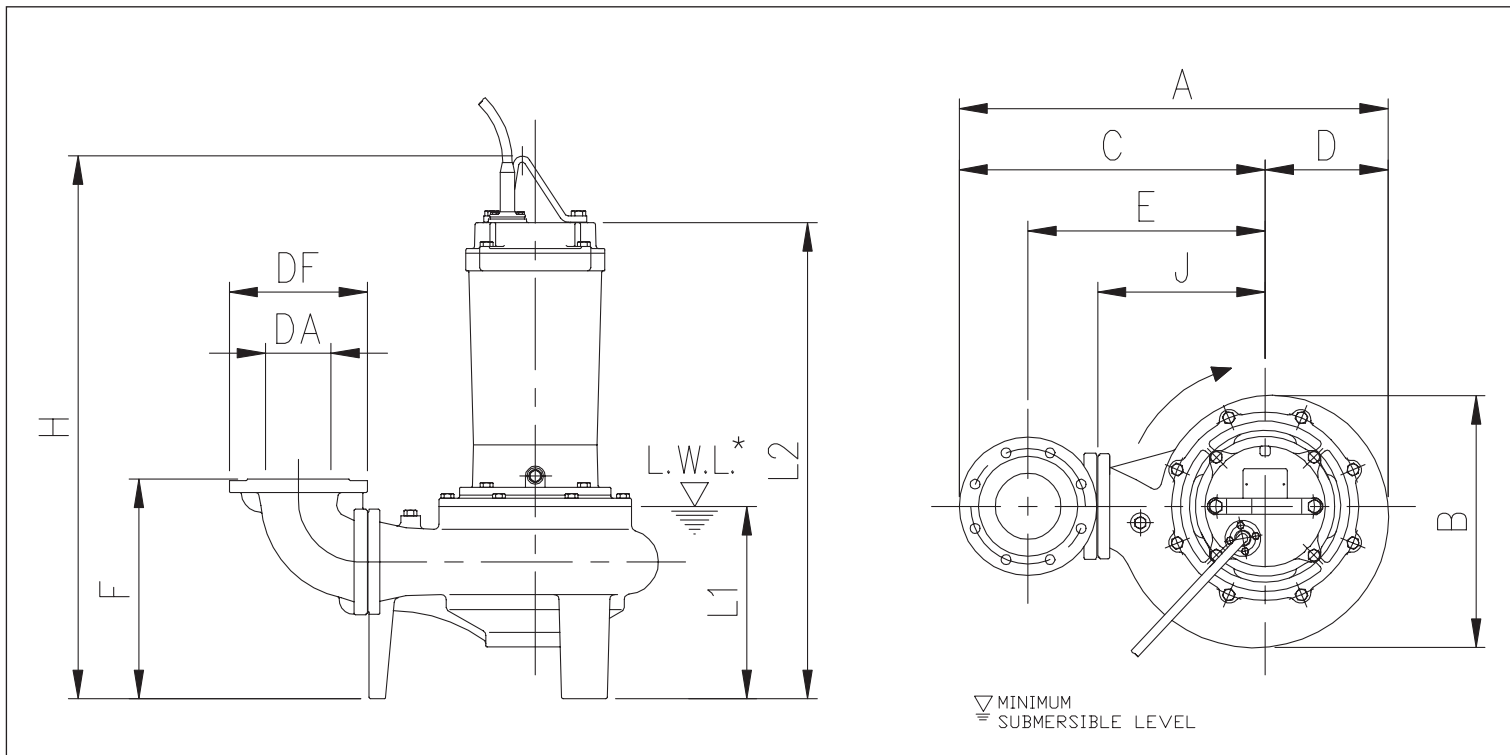
Model	P <sub>2</sub>		Q = Capacity								
			l/min 1000	2000	2500	3000	3400	4000	4500	5000	5500
	[kW]	[HP]	m <sup>3</sup> /h 60	120	150	180	204	240	270	300	330
			H = Head [m]								
150DML55.5	5,5	7,5	14,9	10,1	8,0	5,9	3,9	-	-	-	-
150DML57.5	7,5	10	18,0	13,7	11,6	9,5	7,5	4,0	-	-	-
150DML511	11	15	25,2	20,2	17,5	14,7	12,2	8,6	5,4	-	-
150DML515	15	20	31,3	26,1	23,4	20,6	18,2	14,8	11,9	8,6	-
150DML522	22	30	36,4	31,1	28,0	25,2	22,9	19,5	16,8	13,8	10,5

**PERFORMANCE TABLE 50-65DMLF**

Model	P <sub>2</sub>		Q=Flow rate								
			l/min 120	200	223	300	322	400	500	600	750
	[kW]	[HP]	m <sup>3</sup> /h 7	12	13	18	19	24	30	36	45
			H=Head [m]								
50DMLF51.1M	1,1	1,5	11,5	9,3	8,6	6,9	6,4	4,8	3,1	-	-
65DMLF51.1M	1,1	1,5	-	15	14,5	12,9	12,4	10,4	7,7	5	-
65DMLF51.8M	1,8	2,5	-	14,4	14	12,5	12,1	10,6	8,7	6,8	4

## SUBMERSIBLE SEWAGE PUMPS SINGLE-CHANNEL

### DIMENSIONS DML



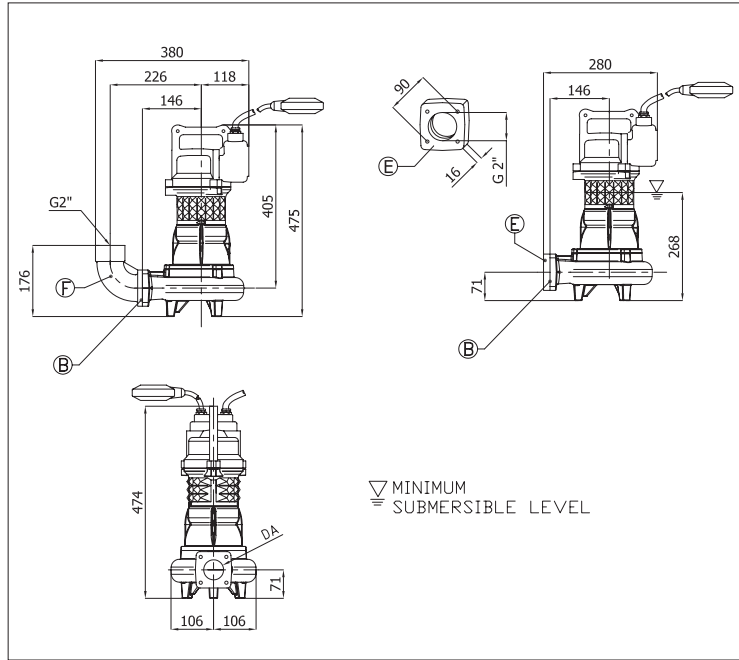
### DIMENSIONS TABLE DML

Model	DA	kW	Dimensions [mm]										Weight [kg]
			A	B	C	D	E	F	H	J	L1	L2	
80DML52.5	80	2,2	542	320	385	157	285	308	668	210	279	547	80,0
80DML53.7	80	3,7	542	320	385	157	285	308	727	210	279	627	87,0
100DML53.7	100	3,7	582	320	425	157	315	313	727	210	279	627	89,0
100DML55.5	100	5,5	658	381	470	188	360	339	824	255	310	724	121,0
100DML57.5	100	7,5	658	381	470	188	360	339	824	255	310	724	125,0
100DML511	100	11	751	455	530	221	420	355	938	315	329	778	160,0
100DML515	100	15	751	455	530	221	420	355	938	315	329	778	166,0
100DML522	100	22	795	497	550	245	440	358	1021	335	342	841	226,0
150DML55.5	150	5,5	715,5	381	527,5	188	385	369	824	255	310	724	127,0
150DML57.5	150	7,5	715,5	381	527,5	188	385	369	824	255	310	724	132,0
150DML511	150	11	808,5	455	587,5	221	445	385	938	315	329	778	166,0
150DML515	150	15	808,5	455	587,5	221	445	385	938	315	329	778	172,0
150DML522	150	22	852,5	497	607,5	245	465	388	1021	335	342	841	232,0

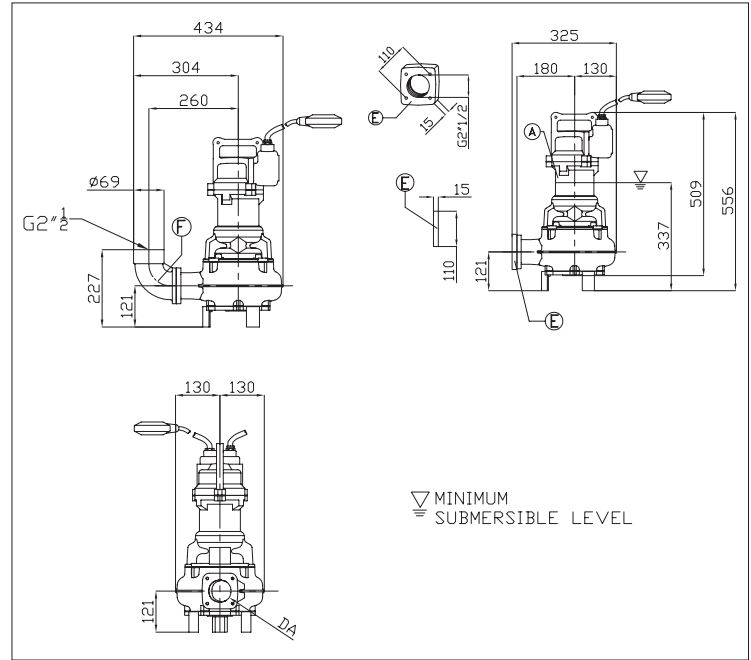
# DML - DMLF

## SUBMERSIBLE SEWAGE PUMPS SINGLE-CHANNEL

**DIMENSIONS 50DMLF (1.1 kW)**



**DIMENSIONS 65DMLF (1.1÷1.8 kW)**



**DIMENSIONS TABLE 50DMLF (1.1 kW)**

DA	Model	[kW]	Weight [kg]
50	50DMLF51.1M (120)	1.1	31

**DIMENSIONS TABLE 65DMLF (1.1÷1.8 kW)**

DA	Model	[kW]	Weight [kg]
65	65DMLF51.1M (135)	1.1	42
	65DMLF51.8M (125)	1.8	45

